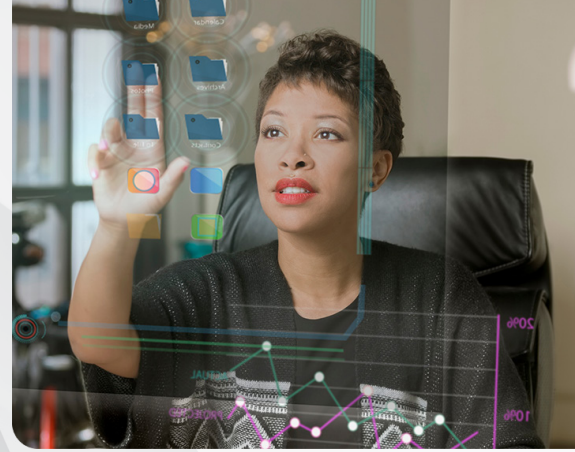


Building Data Analytics Solutions Using Amazon Redshift

Course Benefits & Agenda



Overview	1
Course Benefits	1
Agenda	2

Overview

In this course, you will build a data analytics solution using Amazon Redshift, a cloud data warehouse service. The course focuses on the data collection, ingestion, cataloging, storage, and processing components of the analytics pipeline. You will learn to integrate Amazon Redshift with a data lake to support both analytics and machine learning workloads. You will also learn to apply security, performance, and cost management best practices to the operation of Amazon Redshift.

Course Benefits

This course teaches you how to:

- Compare the features and benefits of data warehouses, data lakes, and modern data architectures
- Design and implement a data warehouse analytics solution
- Identify and apply appropriate techniques, including compression, to optimize data storage
- Select and deploy appropriate options to ingest, transform, and store data
- Choose the appropriate instance and node types, clusters, auto scaling, and network topology for a particular business use case
- Understand how data storage and processing affect the analysis and visualization mechanisms needed to gain actionable business insights
- Secure data at rest and in transit
- Monitor analytics workloads to identify and remediate problems
- Apply cost management best practices

Agenda

Day 1

Module	Topic
Module A	Overview of Data Analytics and the Data Pipeline
Module 1	Using Amazon Redshift in the Data Analytics Pipeline
Module 2	Introduction to Amazon Redshift
Lab 1	Load and query data in an Amazon Redshift cluster
Module 3	Ingestion and Storage
Lab 2	Data analytics using Amazon Redshift Spectrum
Module 4	Processing and Optimizing Data
Lab 3	Data transformation and querying in Amazon Redshift
Module 5	Security and Monitoring of Amazon Redshift Clusters
Module 6	Designing Data Warehouse Analytics Solutions
Module B	Developing Modern Data Architectures on AWS
Module C	Course Wrap-Up